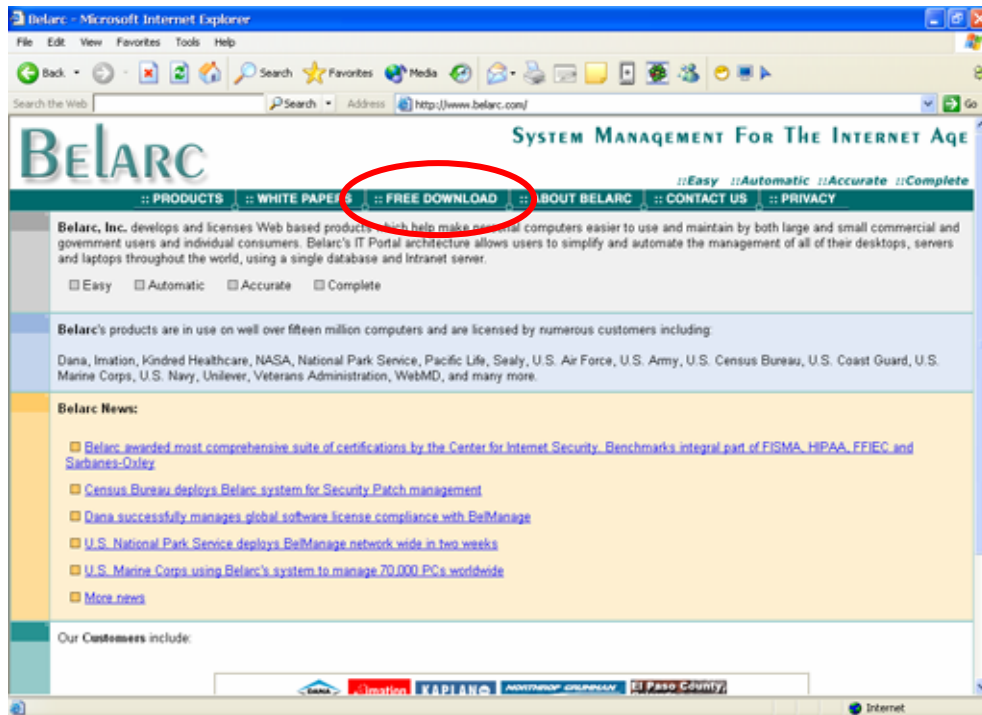
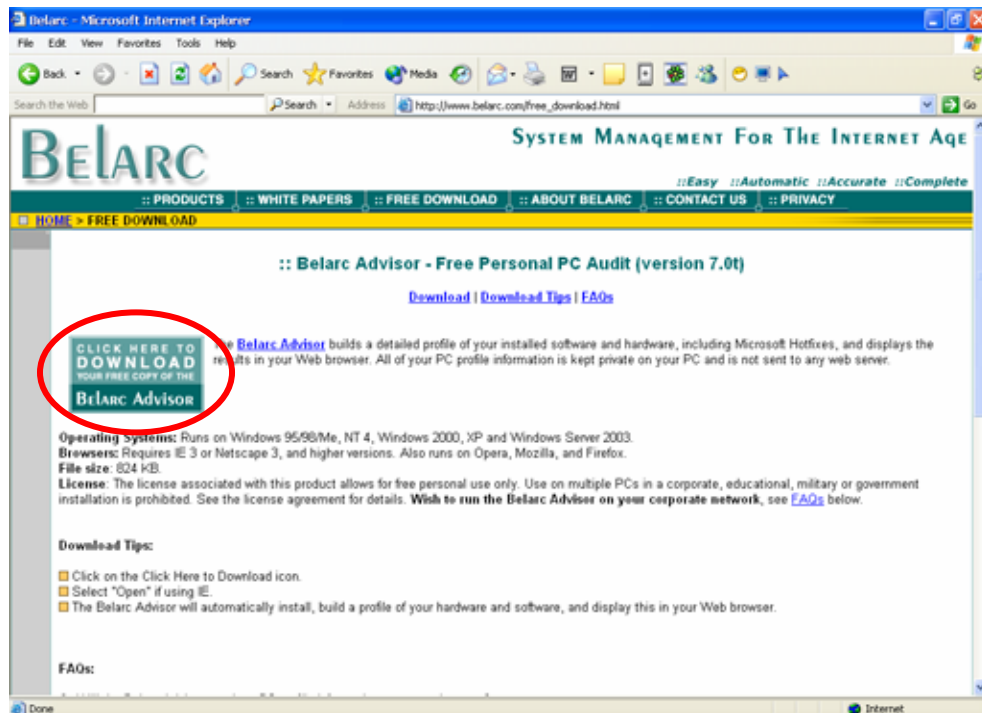


# BELARC

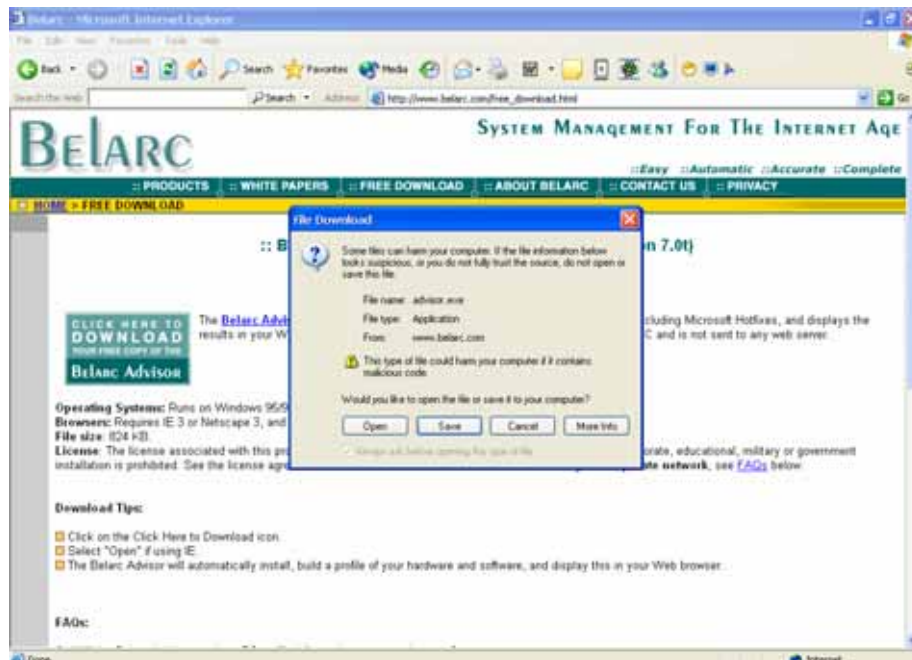
步驟一：請瀏覽[www.belarc.com](http://www.belarc.com)，按紅圈所示的“Free Download”（免費下載）。



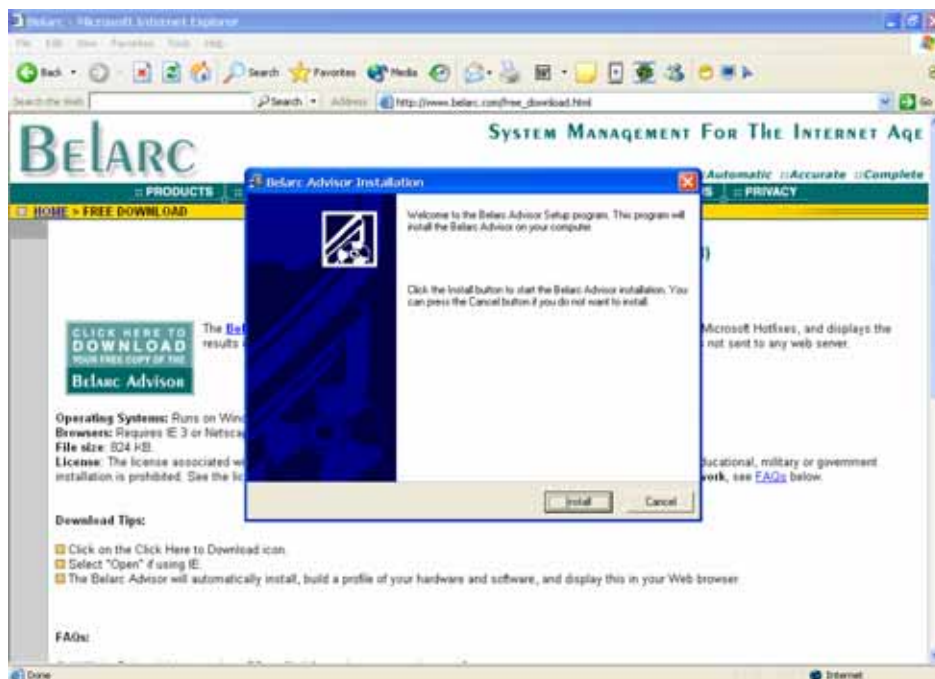
步驟二：按版面左方紅圈所示的按鈕。



步驟三：檔案下載的視窗會自動開啟。按下“Open”（開啓）後，Belarc Advisor 會自動進行安裝。



步驟四：安裝 Belarc Advisor，按下“Install”（安裝）。



步驟五：電腦系統配置總結完成，請列印報告。

The screenshot shows the Belarc Advisor web interface in Microsoft Internet Explorer. The browser title is "Belarc Advisor Current Profile - Microsoft Internet Explorer". The address bar shows the local file path: "C:\Program File\Belarc\Advisor\Content\Index\Fault1.html".

The main heading is "BELARC ADVISOR" with the tagline "PC Audits in Your Web Browser!". Below this is a disclaimer: "The license associated with the Belarc Advisor product allows for **free personal use only**. Use on multiple computers in a corporate, educational, military or government installation is prohibited. See the [click to download](#) for details. The information on this page was created locally on your computer by the Belarc Advisor. Your computer profile was not sent to a web server. [Click here for more info.](#)"

On the left side, there are navigation links: "About Belarc", "System Management Products", "Download Area", and "In page links" (which includes "Installed Software", "Software Licenses", and "Software Removals").

The main content area features a "System Security Status" section with three indicators: "0.00 of 10 (click...)", "Up-to-date" (with a green checkmark), and "Microsoft Security Updates" (with a red X and "10 missing").

Below this is the "Computer Profile Summary" section, which includes the following information:

- Computer Name: Faye (N W520)
- Profile Date: Tuesday, 16 August, 2005 10:04:26
- Advisor Version: 7.05
- Windows Login: Faye

A link is provided: "Click here for Belarc's System Management products for large and small companies."

The bottom section displays hardware specifications in a table-like format:

Operating System	System Model
Windows XP Professional Service Pack 1 (Build 2600)	Samsung Electronics Aquila Slim Platform Revision 01 System Serial Number: 123400N400015 Chassis Serial Number: 123400N400015 Enclosure Type: Notebook
Processor *	Main Circuit Board *
1.50 gigahertz Intel Pentium M 64 kilobyte primary memory cache 1024 kilobyte secondary memory cache	Board: Samsung Electronics Aquila Slim Platform Revision 01 - Serial Number: 123400N400015 BIOS: Phoenix Technologies LTD 061E 10/25/2003
Drives	Memory Modules *4